

Ray Windfarm

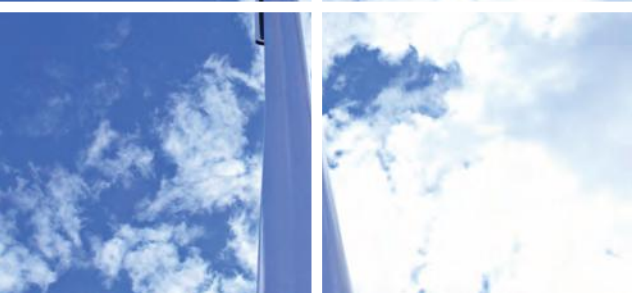
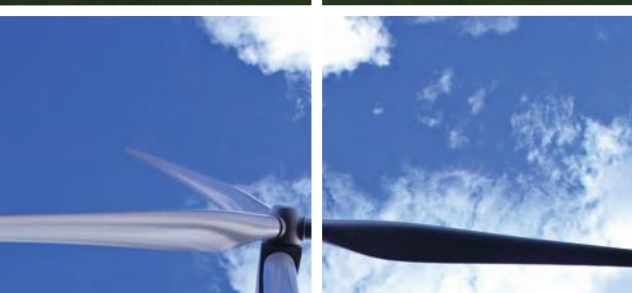
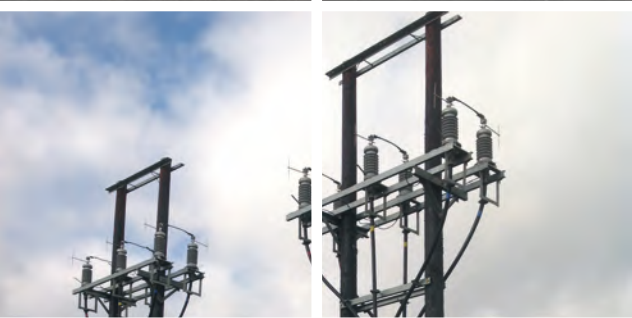
Powersystems has successfully completed and handed over the 54.4MW 33kV electrical infrastructure at Ray Windfarm, fulfilling its contract to provide the design, supply, installation and commissioning services.

The 26km 33kV grid connection route made up of 6 x 33kV power cables, fibre optic cables, over 300 terminations and 4 x overhead line section points, was undertaken by Powersystems as the Independent Connection Provider in Northern Powergrid's region. We made the final connection to their new 275/33kV substation, energised and handed over the assets to them in January 2017.

Powersystems provided all the electrical infrastructure for the 33kV substation and the 33kV cable array connecting the 16 x 3.4MW turbine generators. The substation included a 4 panel 33kV switchboard, 4 MVA harmonic filter, LV auxiliary transformer & standby generator for the client and a 2 panel 33kV switchboard, protection and control equipment for Northern Power Grid. The 14km windfarm 33kV cable array included direct laid 3x single core power cable, fibre cable and earthing conductor with 126 joints & terminations.

We have again shown our ability to work in partnership with the main civil contractor, turbine installer and the windfarm client to deliver this project to plan, and to provide that extra level of service and support to accommodate their additional requirements throughout the project.

Ray Windfarm gained UK Government approval in 2005 and work started in 2015. Now that it is fully operational it is able to provide electricity for 30,000 homes directly into the National Grid transmission network, for the benefit of customers across the UK!



t 01454 318000

w www.powersystemsuk.com